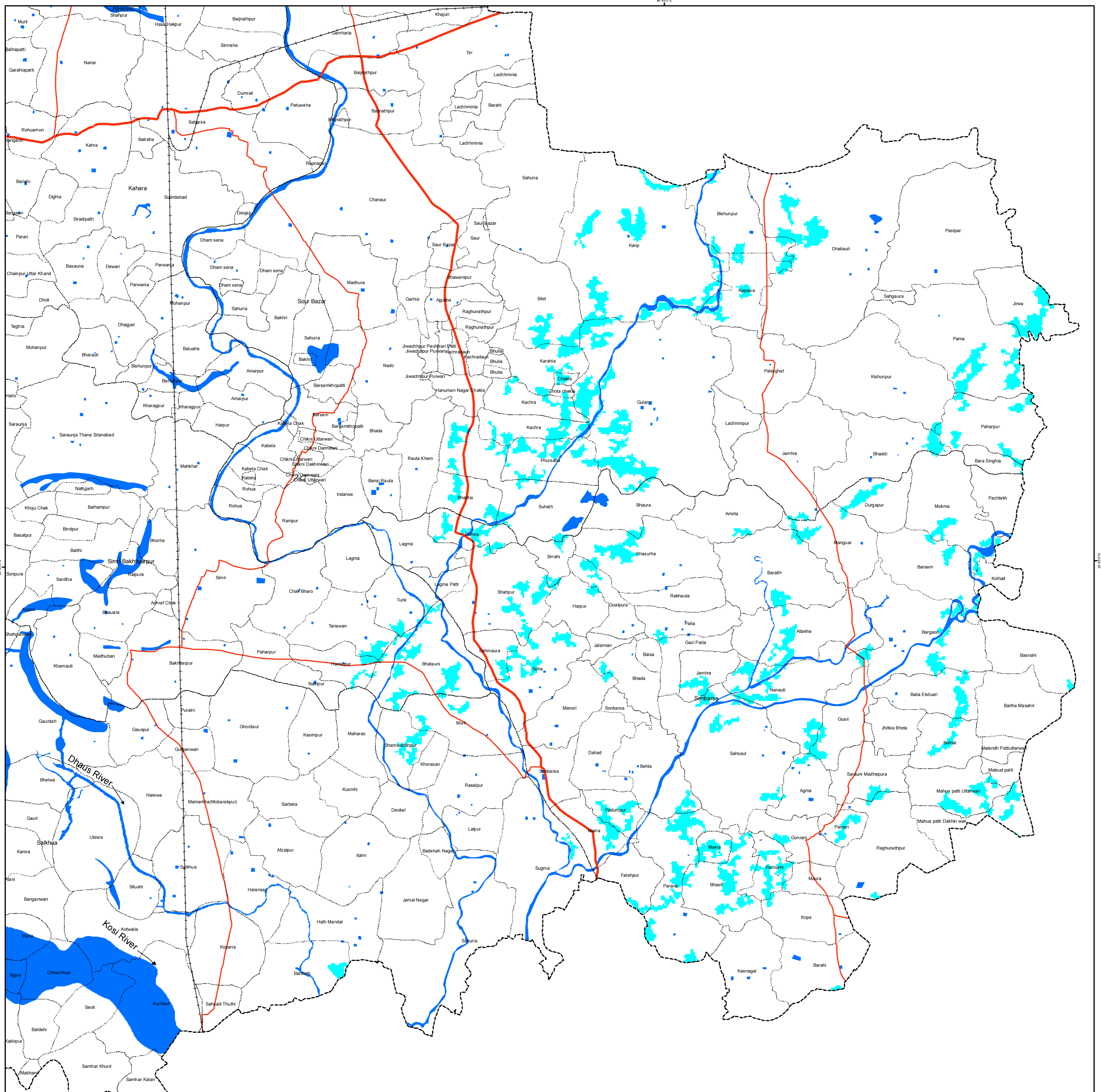


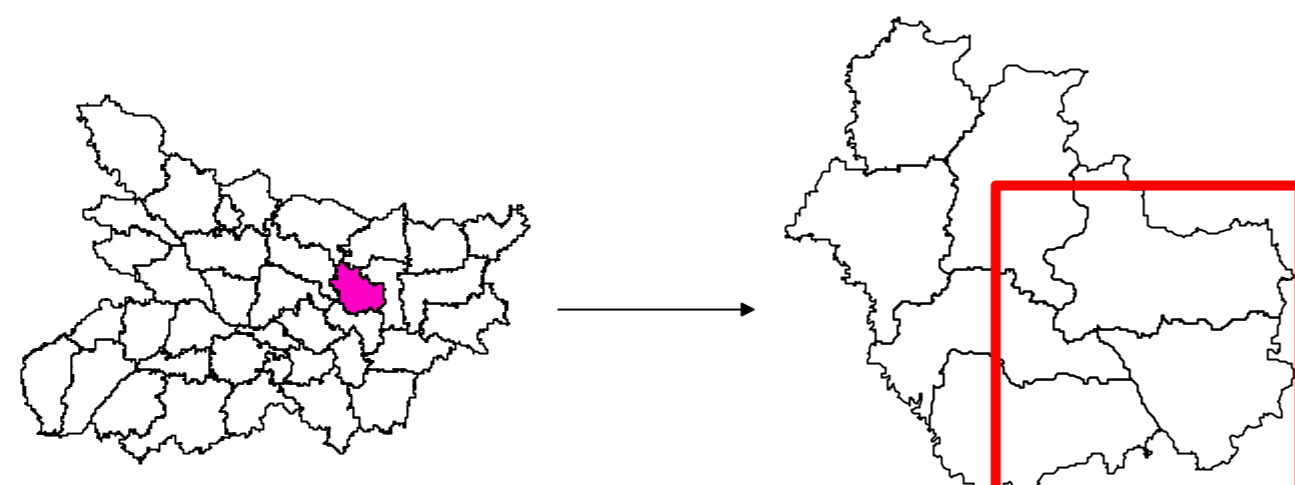
# Flood Inundated Areas in part of Saharsa District, Bihar

Based on the analysis of Radarsat-2 data of 09-October-2008

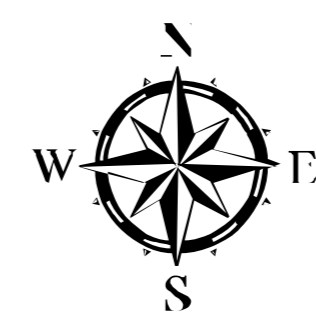


## Legend

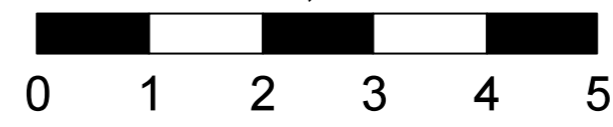
- District Boundary
- Taluk Boundary
- Village Boundary
- Railway
- Submerged Railway
- National Highway
- Submerged National Highway
- State Highway
- Submerged State Highway
- District Road
- Submerged District Road
- Flood Inundation
- Normal River/Water bodies



Location map



1:50,000



Kilometers

Decision Support Centre (DSC)  
RS & GIS Applications Area  
National Remote Sensing Centre  
Dept. of Space, Govt. of India  
HYDERABAD- 500 625  
E-Mail: flood@nrsc.gov.in

**nrsc**