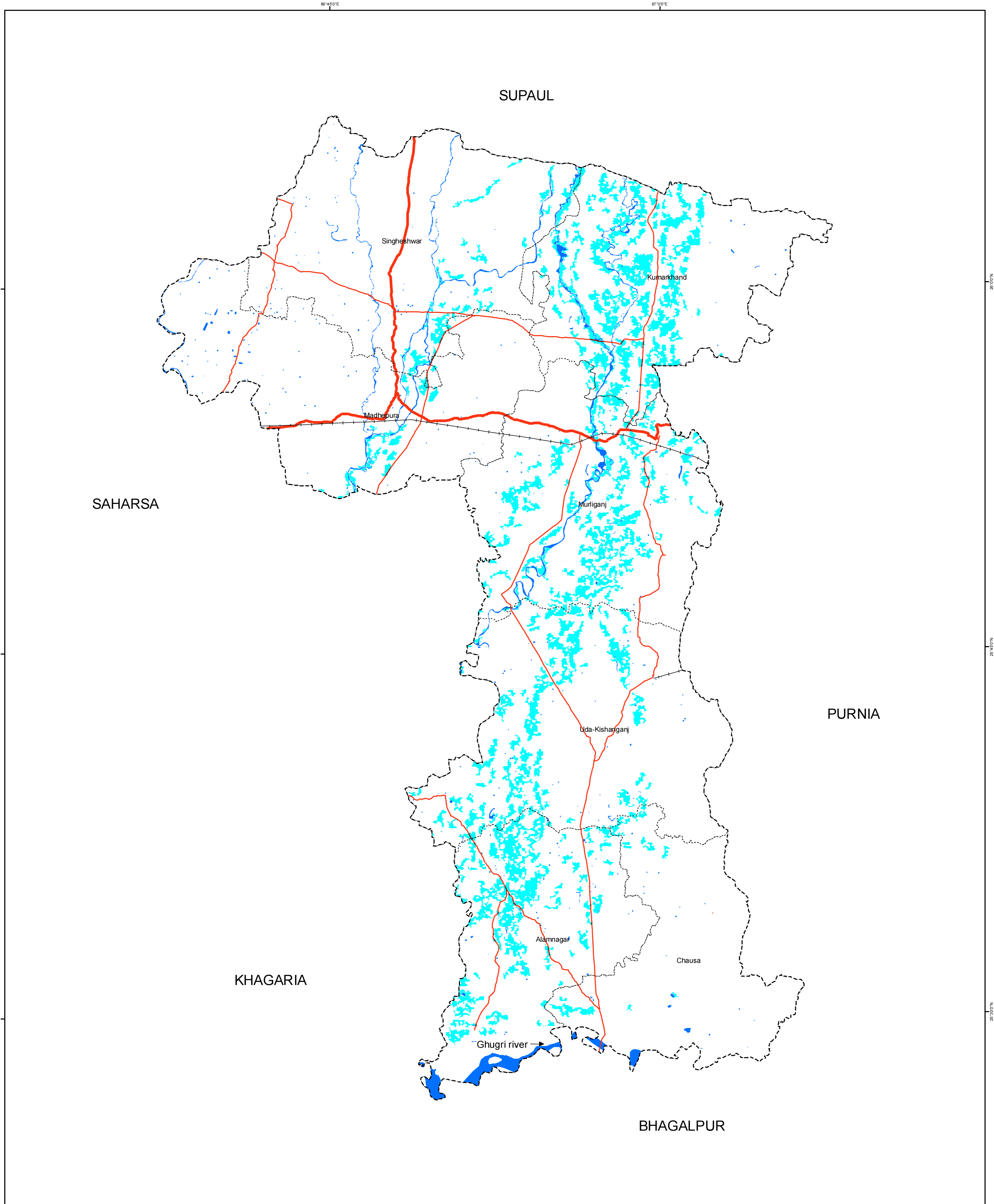


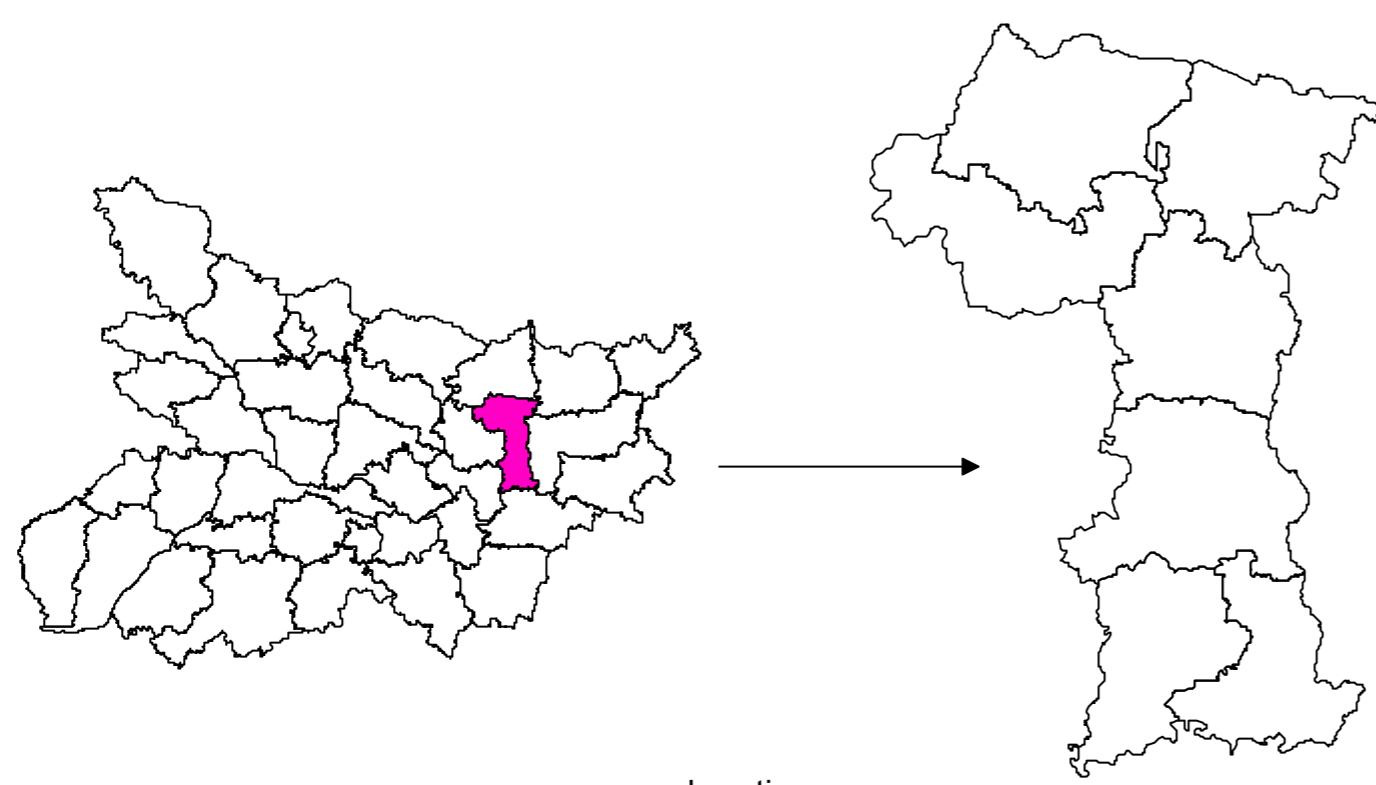
# Flood Inundated Areas in Madhepura District, Bihar

Based on the analysis of Radarsat-2 data of 09-October-2008



## Legend

- District Boundary
- Taluk Boundary
- +--- Railway
- +--- Submerged Railway
- ==== National Highway
- ==== Submerged National Highway
- ==== State Highway
- ==== Submerged State Highway
- ==== District Road
- ==== Submerged District Road
- Flood Inundation
- Normal River/Water bodies



1:150,000



Kilometers

Decision Support Centre (DSC)  
 RS & GIS Applications Area  
 National Remote Sensing Centre  
 Dept. of Space, Govt. of India  
 HYDERABAD- 500 625  
 E-Mail: flood@nrsc.gov.in

**nrsc**