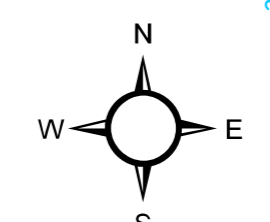
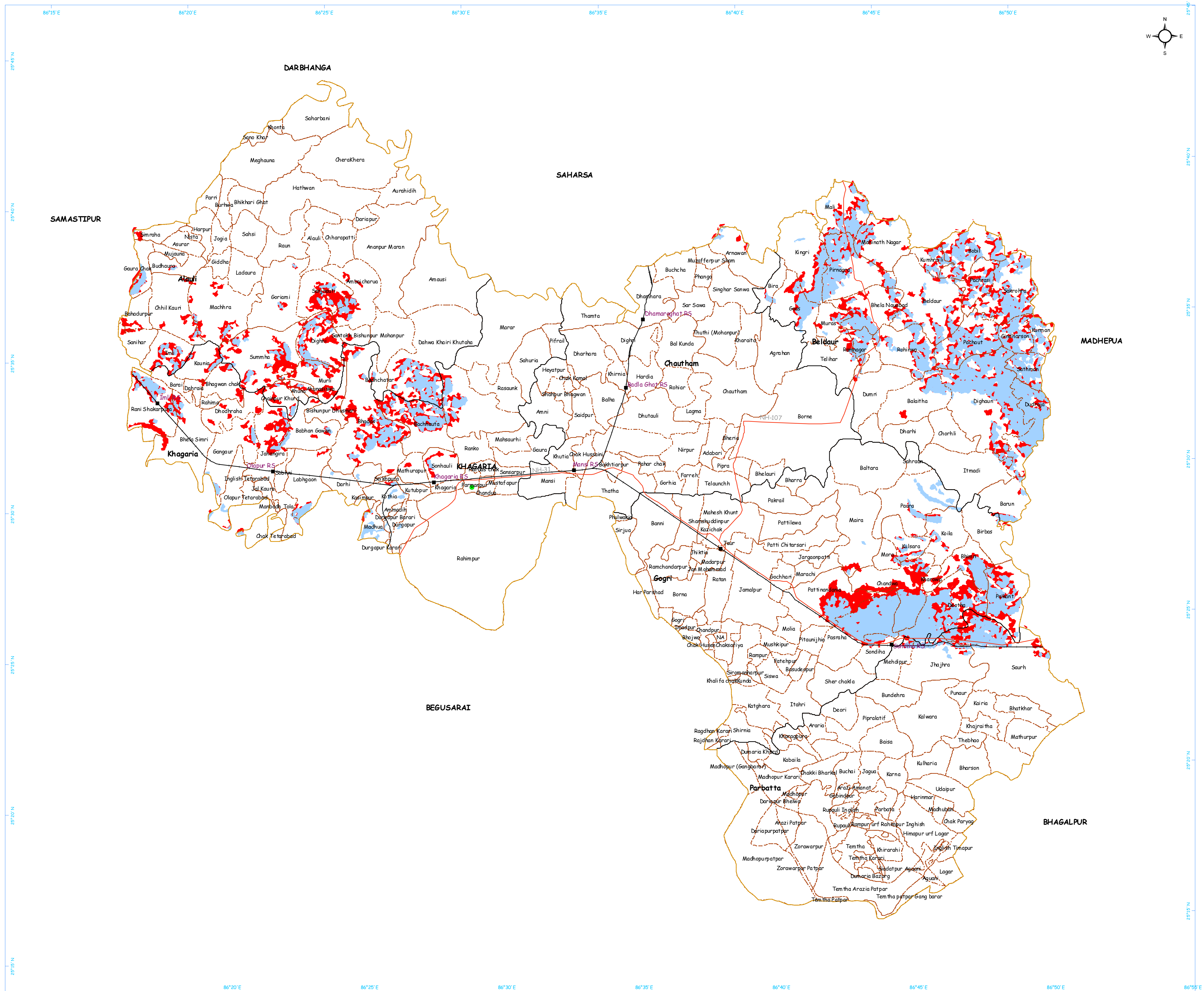


Flood Inundation Map of Khagaria District, North Bihar State

[Based on Radarsat-2 Satellite Image of 30th September 2008]

fmis

Bihar



Legend

District Boundary	Block Boundary
Village Boundary	International Boundary
Inundation 30 Sep,08	Inundation has Receded
Embankment	Breach Point
Canal	River Gauge Station
National Highway	State Highway
Railway line	End Of Satellite Coverage
Railway Stn.	District Headquarter
District Headquarter	Settlement

LOCATION MAP

Bihar

Khagaria District

Projection: Lambert Conformal Conic
 Datum: wgs 84
 Pixel size: 25m X 25m

Scale: 1:350,000

GROUND SITUATION

A breach in Eastern Afflux Bund of Kosi Embankment 12.10 KM to 12.90 KM, upstream of Kosi Barrage at Birpur has occurred on 18th August 2008. Due to this breach in the embankment, flood water from Nepal side entered into Supaul District of Bihar State in India. The flood water has inundated a vast area of Supaul, Madhepura & Araria districts of Bihar and it is further spreading into adjoining districts of Purna and Saharsa.

Inundation Layer provided by DSC, NRSA, Hyderabad

Prepared Under
 world bank-DFID Technical Assistance
 By
 Flood Management Information System Cell
 water resources department
 Government of Bihar
 eMail: fmisc_bihar@yahoo.co.in